

FRAME

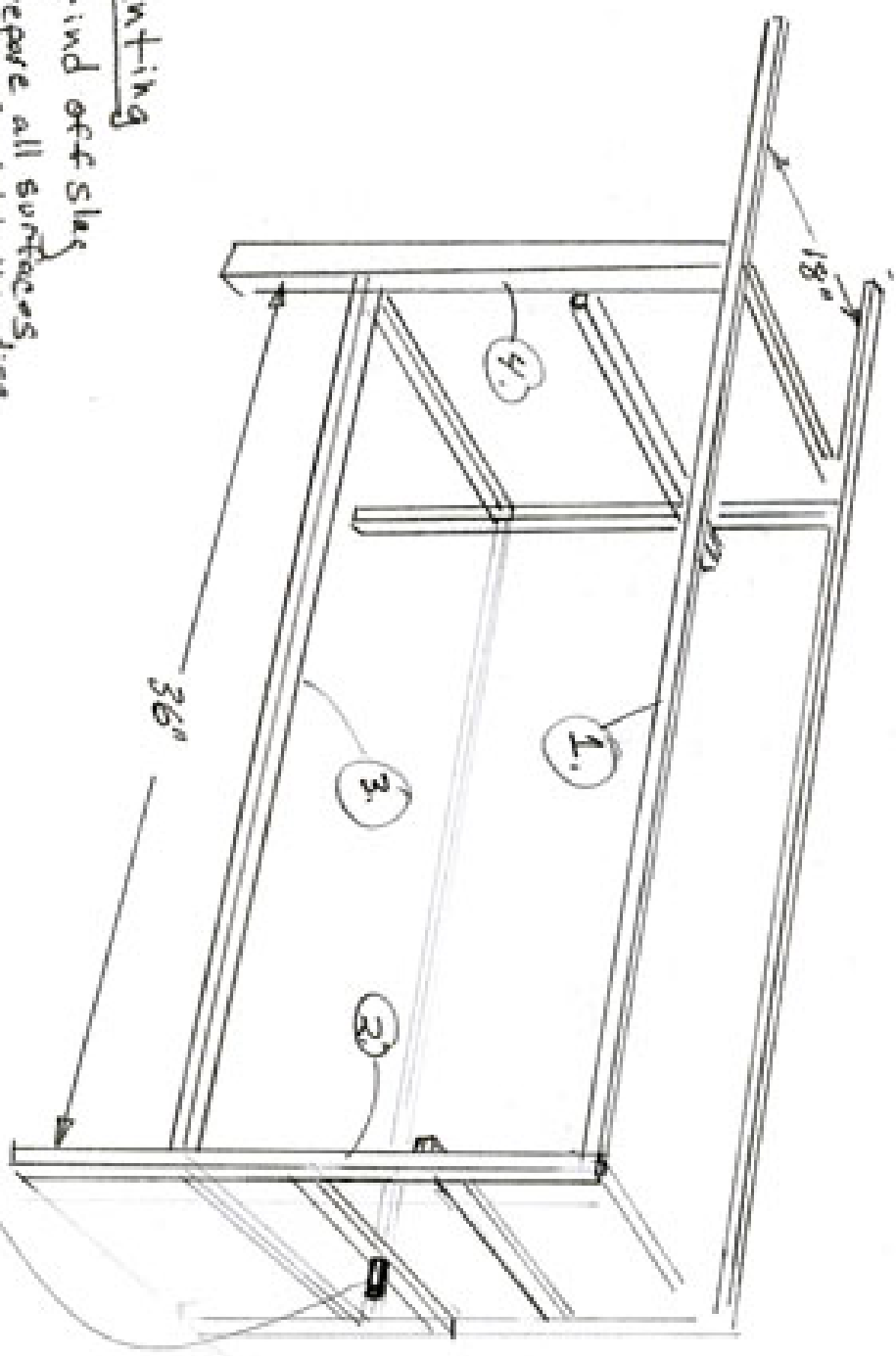
Welding/Assembly

Position parts
1 through 4 on
shop floor or
welding table, and
tack weld.

↓
Position opposite
four pieces on
tack-welded
Subassembly, and
tack weld.

↓
Lay first sub-
assembly on
floor, hold one
crosspiece at
a tint in
position and
tack weld.

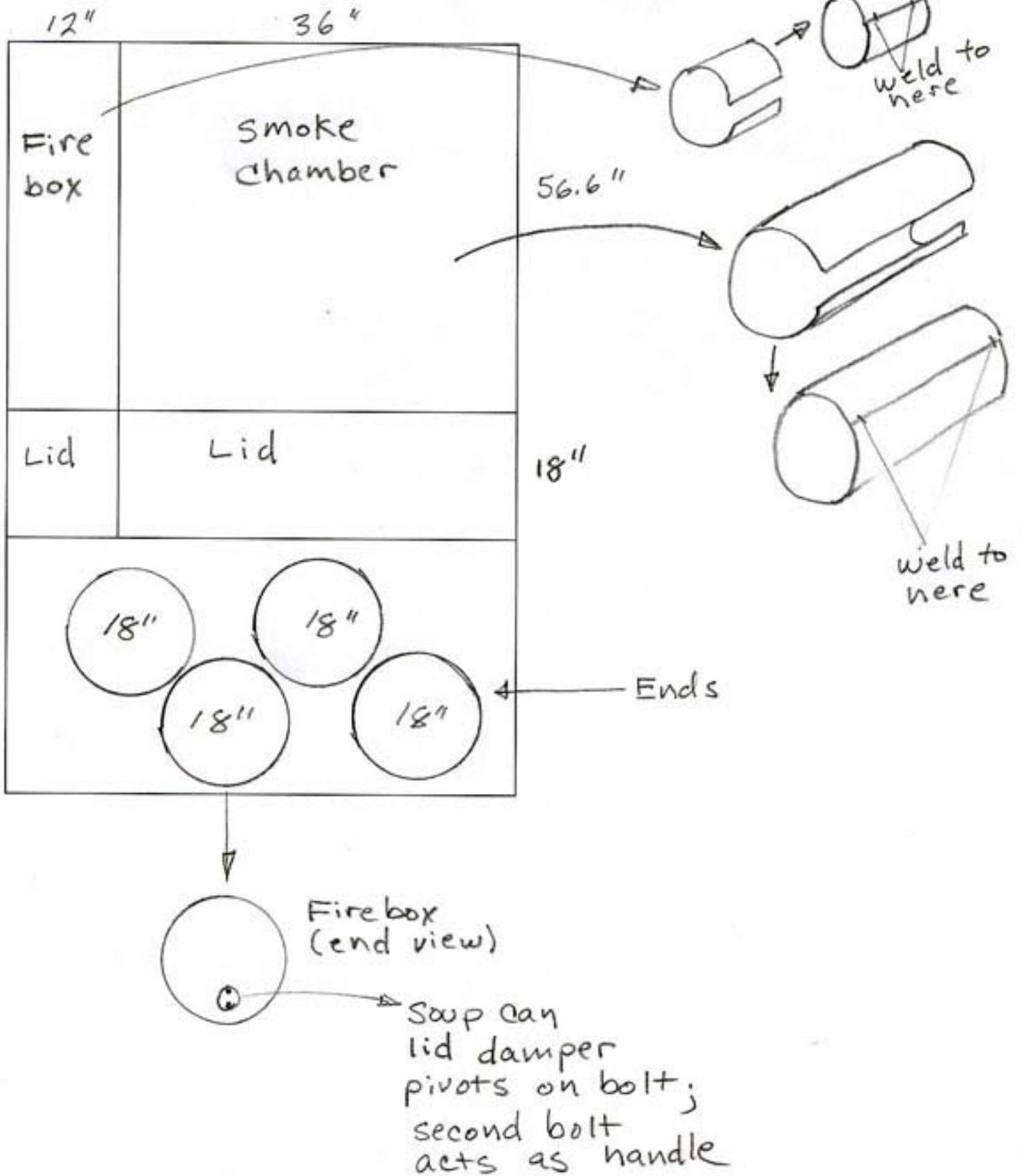
↓
With all pieces
tack welded,
Square up assembly
using a nylon
catalot strap.
Finish weld.



Painting

- grind off slag
- prepare all surfaces with Scotchbrite disc abraded in drill
- apply one coat of zinc-rich cold galvanizing downpound primer
- apply two coats Rust-oleum Hammerstone paint

4' x 10' sheet of 10 ga. mild steel

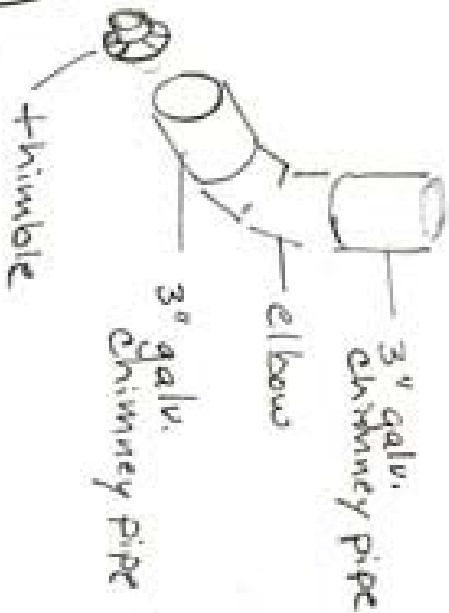
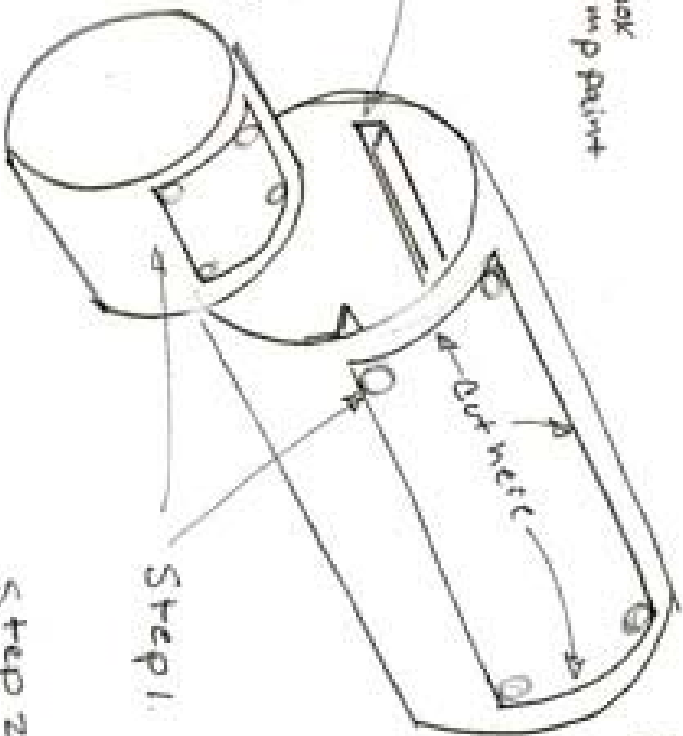


Painting/assembly

- Radius all sheared edges
- Grind $\frac{1}{2}$ " radius on all lid corners
- Remove all mill scale and rust with Scotchbrite disc chucked in a drill
- Clean and degrease with lacquer thinner or other solvent
- Paint outside of smokebox and firebox with high-temp paint
- Paint outside of lids
- rivet lids in place

$\frac{3}{4}$ " angle iron welded to sides of Smoke chamber Support grates

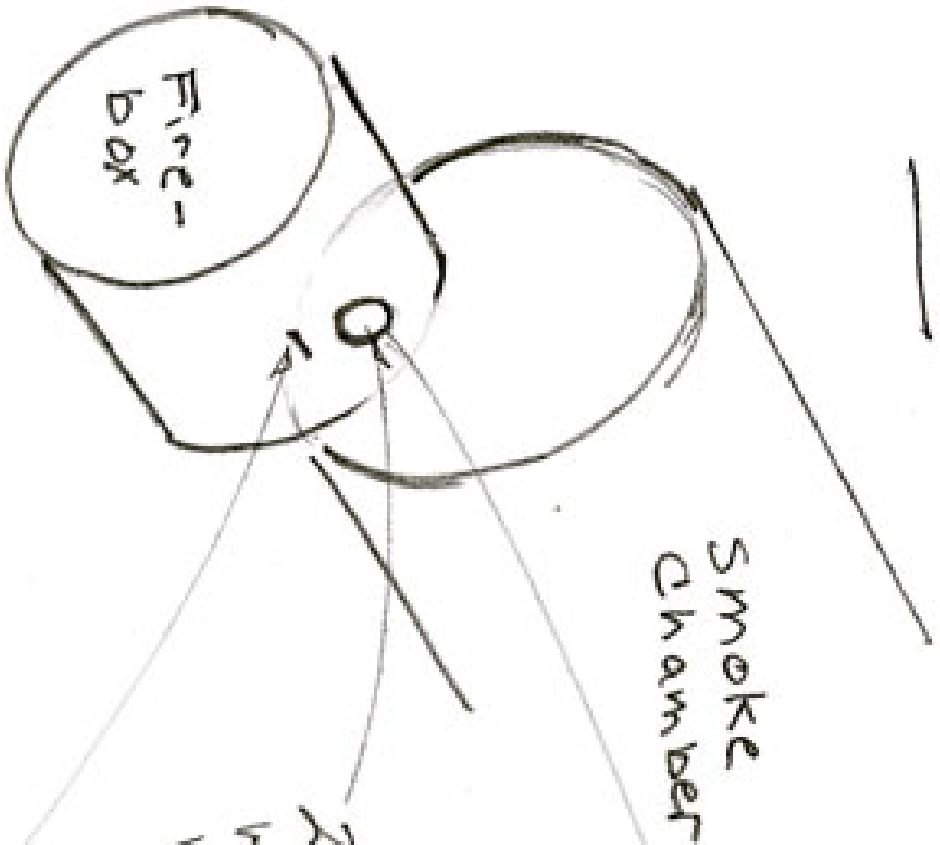
Grates:
11 $\frac{3}{4}$ " x 17 $\frac{3}{4}$ "
Weber grill replacement parts



Step 1. make 2" dia. cuts with hole saw

Step 2. make 3-sided cut to remove scrap

Vent



Smoke Chamber

2-1/2" - dia.
hole for
vent assembly

5/16" x 1 1/2" bolt
serves as mounting
stud, allows
firebox to be
easily supported
while vent is
inserted and
assembled

See
Photo

Vent Assembly

- one 2" closed nipple
- one 2" union disassembled